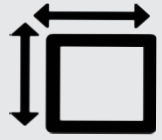




ORLANDO RETAIL INVESTMENT

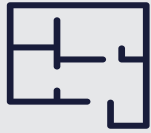
2008 & 2010 N ORANGE AVE ORLANDO, FL 32804

\$4,300,000



12,551 SF




BUILDING SIZE



0.55 ACRE

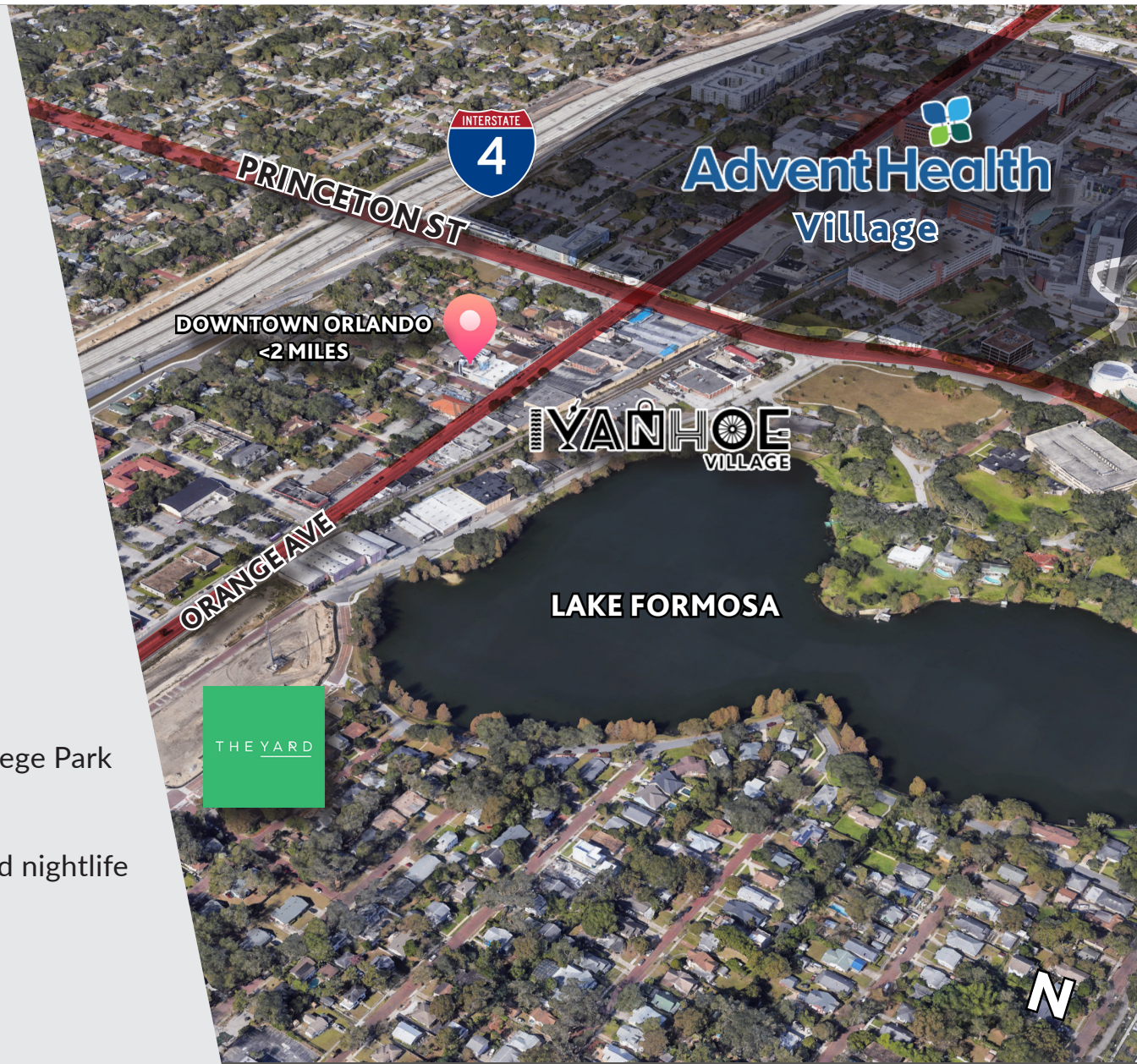
TOTAL LOT SIZE

DEMOGRAPHICS

	RADIUS	3 MILE	5 MILE
	Households	53,900	131,000
	Average Income	\$77,400	\$63,500
	Population	97,500	275,000

PROPERTY HIGHLIGHTS

- » Located in the heart of Advent Health Village
- » Minutes from I-4, Mills Park, Downtown, College Park
- » Prime location in Ivanhoe Park
- » Close proximity to well known restaurants and nightlife
- » Located in high-traffic area
- » Additional space available

**WILLIAM JENNINGS III**

SALES ASSOCIATE

✉ WILLIAM@GARITOCO.COM

☎ +1 (443) 934-0100

🌐 GARITOCO.COM

Garito & Company
14 E Washington St
Orlando, FL 32806
+1 407 777 9660

www.garitoco.com
